

TECHNICAL SPECIFICATIONS



Engine

Engine Model	ISUZU BB-4BG1TRP
Number of Cylinders	4
Max. Torque/Speed	337.6N.m/1600rpm
Displacement	4.392L



Hydraulic system

Max. Main Pump Flow	246.4L/min
Main Safety Valve Pressure	31.4/34.3MPa



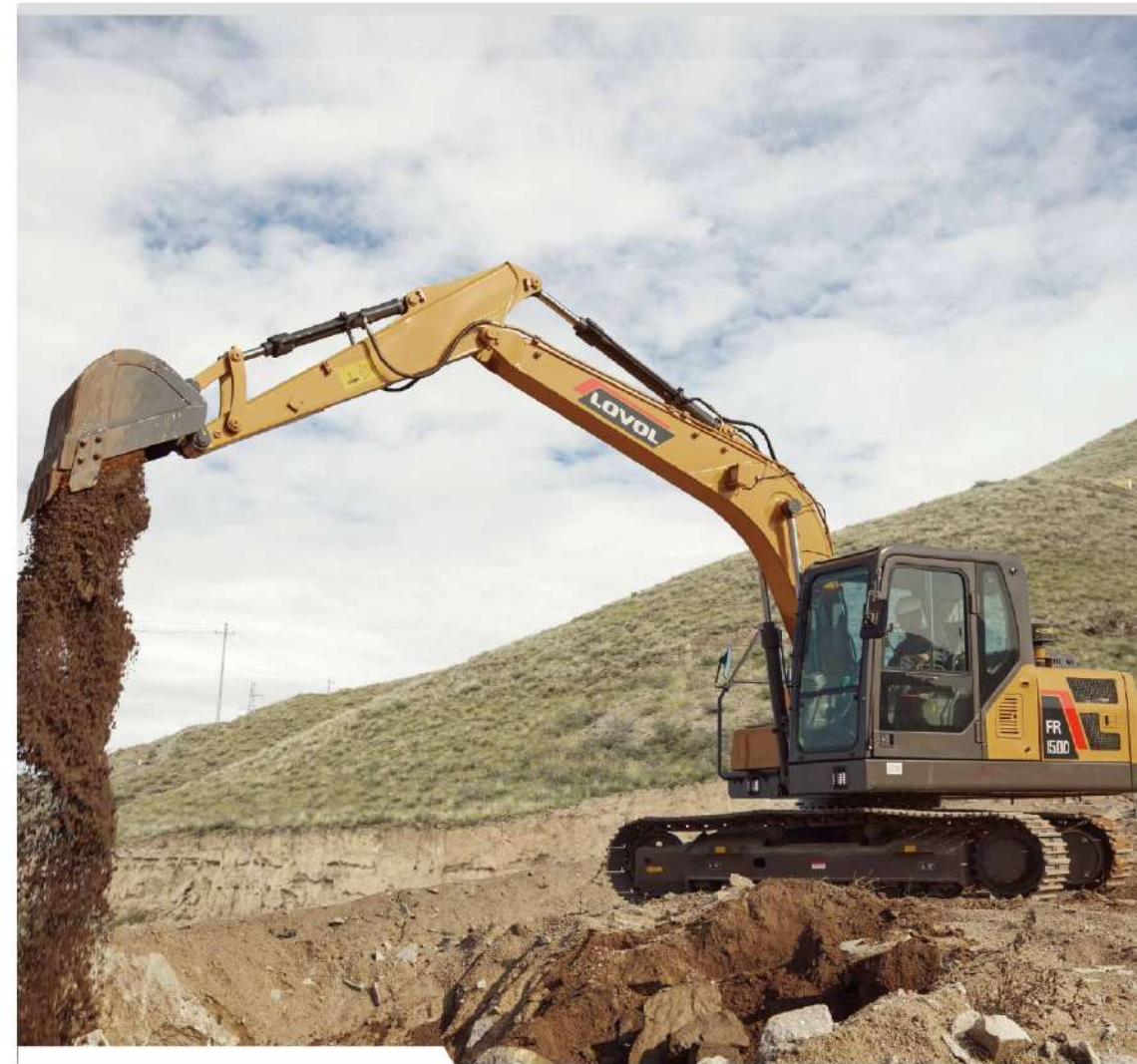
Main Performance

Bucket Digger Force	93.2kN
Arm Digger Force	69kN
Max. Traction Force	112kN
Max. Walking Speed	5.4km/h
Min. Walking Speed	3.2km/h
Rotary Speed	11.5r/min
Gradeability	35°
Ground Pressure	43kPa



Oil Capacity

Fuel Tank	246L
Hydraulic Tank	160L
Engine Oil	13L



Rated Power
Operating Weight
Bucket Capacity

72.7kW/2200rpm
13850kg
0.53m³

FR150D
EXCAVATOR



ENERGY-SAVING

Low Fuel-Consumption Engine

Equipped with original ISUZU turbo-charged engine which is imported from Japan features low engine speed, large torque, low fuel consumption and high performance, saving fuel dramatically. Three stage air filtering and three stage fuel filtering system provide multiple protections to engine.

Optimal Hydraulic System

On base of original Kawasaki hydraulic system, LOVOL Japan engineering center exclusively optimized the valve's spool in order to get better coordination and land grading ability. Negative flow control system which makes good match between engine and hydraulic includes four modes to match up to different application.

Optimal Operating Mode

When using hydraulic hammer, mode-B will automatically adjust engine speed to fit working applications to optimize the fuel consumption.



RELIABILITY

Core Components

Relying on the R&D system of LOVOL Japan Engineering Center, LOVOL has established solid partnerships with world-renowned companies to continuously optimize and improve the quality and service life of our key components. Industry leading components are used on our machines including engine, pump, valve, motor, oil cylinder, controller and forth.

Reinforced Structures

The advanced technology is utilized in stress analysis, which improves the reliability of structures dramatically. The front and rear support of boom are made of cast steel, which effectively reduces concentration of stress, key positions are also reinforced by welding strength plate, which makes arm more robust.

Reliable Plugs

All the wiring harnesses adopt waterproof and dustproof connectors, which have high security level and high reliability.



COMFORT



Large Spacious Cab

Equipped with spacious cab which provides operator large space to operate machine. The premium suspension seat with armrests is very comfortable and it can reduce the working fatigue dramatically. Big LCD screen is easy to read all data and to operate when working. Air conditioning can provide comfortable feeling in cab.

Ergonomic Design

The proportional joystick delivers sensitivity, accuracy and smoothness during operation. This joystick is specially designed to meet different operating conditions. Intelligent control system is standard which could control diverse attachments such as bucket, hammer, scarifier and hydraulic scissors.

Low Noise and Low Vibration

In order to reduce work fatigue and improve productivity, the noise inside of cab has been controlled to the lowest level. The cab is attached to the frame with buffer that dampens vibrations and sound levels to enhance operator comfort.

SERVICEABILITY



Engine Hood and Panels

The large engine hood enlarges maintenance space for operator to check and maintain the engine. The tool box is big with big opening angle which can put grease bucket and special tools easily. One key can open all locks of machine, it is very convenient for the operator.

Electric and hydraulic parts

Pressure sensor is used on the main pump which can monitor hydraulic system's pressure when working. Centralized lubrication makes convenient and easy maintenance to slewing bearing, and the radiator is optimized for easy cleaning. These configurations make operator can maintenance machines easy and convenient.

Filters and Maintenance Period

All the filters are fixed at ground level position, it is very convenient to do routine maintenance. The maintenance interval is also extended to save time and cost.

INCREASE YOUR PRODUCTIVITY AND PROFIT WITH LOVOL ATTACHMENTS

You can easily expand the performance of your machine by utilizing any of the variety of LOVOL Attachments. Each LOVOL Attachments is designed to fit the weight and horsepower of LOVOL Excavator for improved performance, safety, and stability.



Quick Coupler



Scarifier



Hydraulic Hammer



Standard Bucket



Log Grapple



STANDARD CONFIGURATION

Engine

Turbocharged 4 stroke water-cooling direct injection type
Complying with China Stage II emissions
Automatic idle system
Engine oil pan drain valve
Radiator with protective net
Double filter elements dry air filter element
Air pre-filter
Air intake heater
Fan guard

Hydraulic System

Automatic hydraulic system (confluence system)
Anti-swing valve
Movable arm and bucket rod block valve
Multi-stage filtration system
Cylinder buffer device
Auxiliary hydraulic valve
Automatic two-speed travel motor
Slope anti-rotation device
Waste oil discharge pipeline

Electronic Control System

24V power supply
Diagnostic interface
Emergency stop switch
Display brightness adjustment
Maintenance tips
Automatic diagnostic system
Automatic idle system
One-touch pressure augmentation
Safe stop / start function
Main power switch
Anti-theft system
Engine starting protection
Multilingual display
Top light of cab

Cab

Ashtray
Cigar lighter
Seat belt
Front sunshade
Console box
Escape hammer
Thermostatically controlled air conditioner
Audio device
Shock absorber (silicone oil and rubber pad)
Flexible antenna
Radio (with interfaces of MP3 and USB)
Hydraulic safety lock
Sun-protection safety glass
Floor mat
Large storage area
Pull-up front window
Removable lower windshield
Sunshade window
Wipers
Open skylight

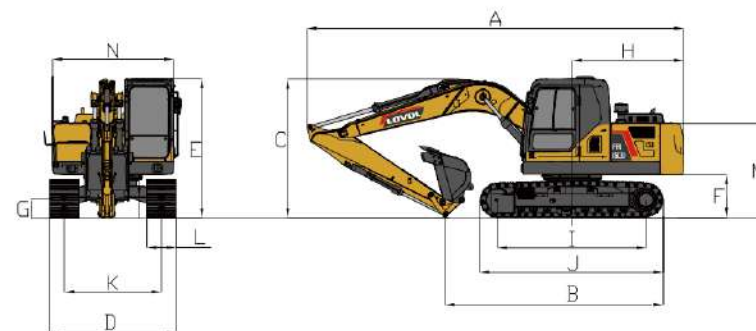
Swing Platform

Passage with railing
Tool box
Anti-skid plate
Large pedal
Large armrest
Bottom protection plate

Chassis

Fixed chassis
500mm, three-tooth track shoe

TECHNICAL SPECIFICATIONS



Working Range

Max. Digging Height	1	8500mm
Max. Dumping Height	2	6080mm
Max. Digging Depth	3	5435mm
Max. Vertical Digging Depth	4	4825mm
Max. Digging Radius	5	8300mm
Max. Ground Digging Radius	6	8170mm
Min. Turning Radius	7	2490mm



Dimensions

Shipping Length	A	7700mm
Shipping Ground Length	B	4395mm
Boom Height	C	2850mm
Shipping Width	D	2505mm
Cab Height	E	2850mm
Ground Clearance of Counter Weight	F	875mm
Min. Ground Clearance	G	420mm
Tail Turning Radius	H	2270mm
Length to Center of Rollers	I	2880mm
Track Length	J	3615mm
Track Gauge	K	2000mm
Track Shoe Width	L	500mm
Hood Height	M	1940mm
Rotary Platform Width	N	2490mm



Other Specifications

Boom Length	4600mm
Arm Length	2500mm
Track Section Number (each side)	43
Track Roller Number	7

